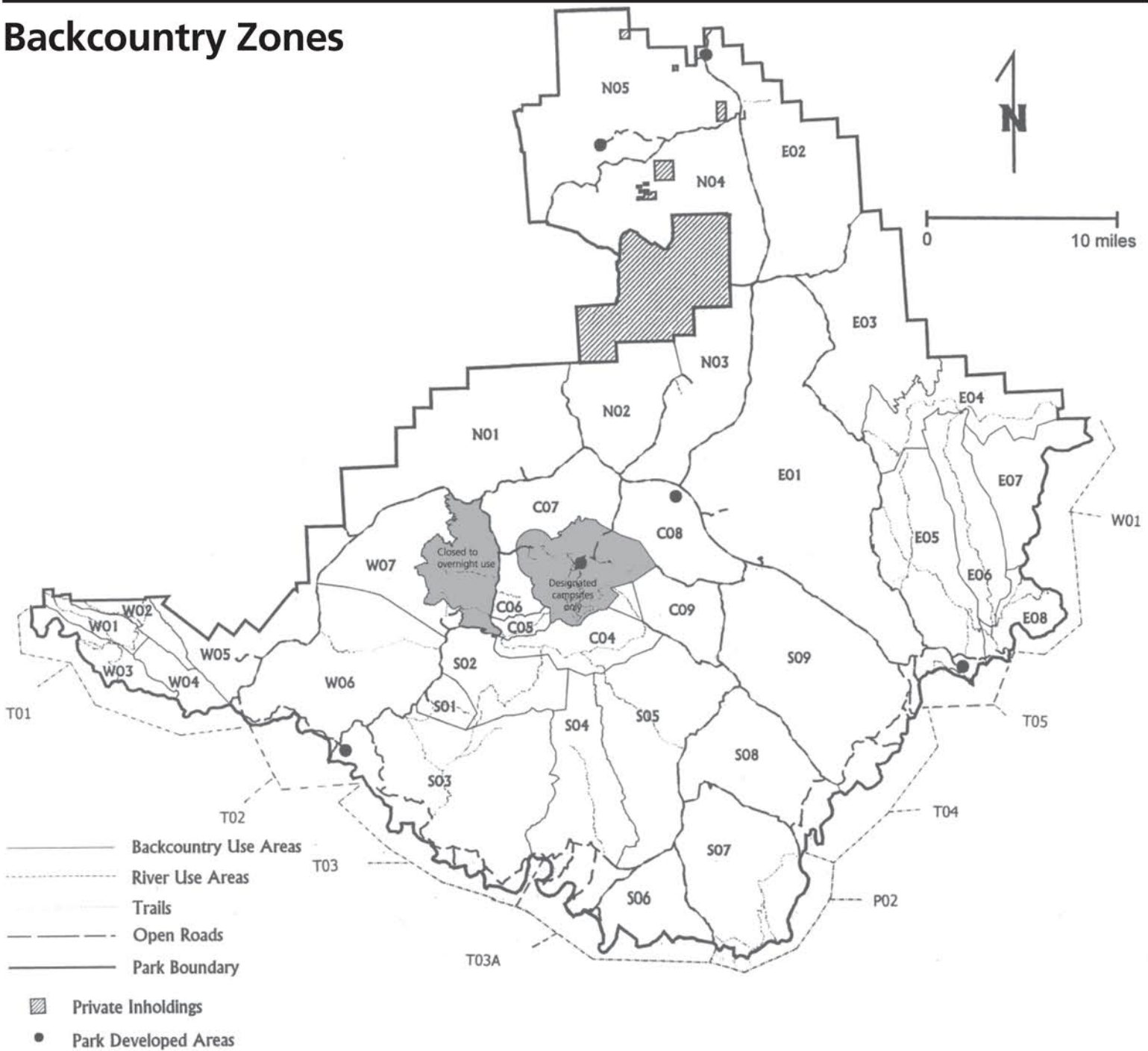




Backcountry Zones



Desert Adventure

The open nature of much of Big Bend's backcountry beckons skilled adventurers. Open zone camping is available throughout much of the park's desert elevations.

Within the backcountry, the group size limit is 15 people. Larger groups must split up and may not camp in adjacent zones.

Choose an appropriate site within a large zone of the park. You must camp at least 1/2 mile from the road and be out of site of any park road. Zone Campers are required to camp more than 100 yards away from any historic structure, archeological site, trail, water source, or cliff edge.

Mountain Zones?

In the Chisos Mountains, backcountry camping is available *only* in designated campsites. The Chisos Basin area and north ridge are closed to backcountry and off-trail camping of any kind. Burro Mesa is also closed to zone camping or any kind of overnight use.

Zone Listing

ZONE USE AREA	CODE	CAPACITY	ZONE USE AREA	CODE	CAPACITY
Lower Juniper	C03	30	Mariposa	W03	20
Dodson	C04	40	Canyon Rim	W04	20
Blue Creek	C05	20	Terlingua Creek	W05	30
Ward Spring	C06	10	Chimneys	W06	25
Ash Spring	C07	40	Tule Mountain	W07	35
Wright Mountain	C08	30	Slickrock	N01	60
Hayes Ridge	C09	30	Paint Gap	N02	40
Mule Ears	S01	18	Grapevine	N03	40
Upper Smoky	S02	35	North Rosillos	N04	35
Lower Smoky	S03	40	Nine Point	N05	35
Dominguez	S04	40	Tornillo Creek	E01	60
Elephant Tusk	S05	40	Dagger Mountain	E02	40
Pettits	S06	25	Sue Peaks	E03	50
Mariscal Mountain	S07	35	Telephone Canyon	E04	40
Talley Mountain	S08	30	Ore Terminal	E05	45
Chilicotal	S09	50	Strawhouse	E06	45
Canyon Flag	W01	20	Arroyo Venado	E07	40
Bruja Canyon	W02	20	Marufo Vega	E08	40